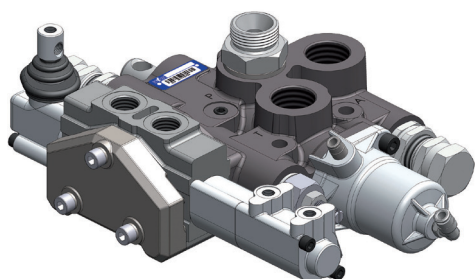
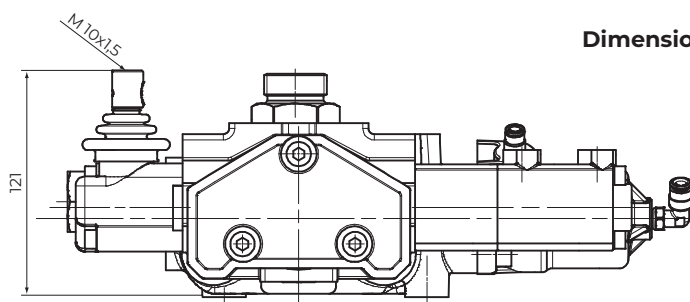
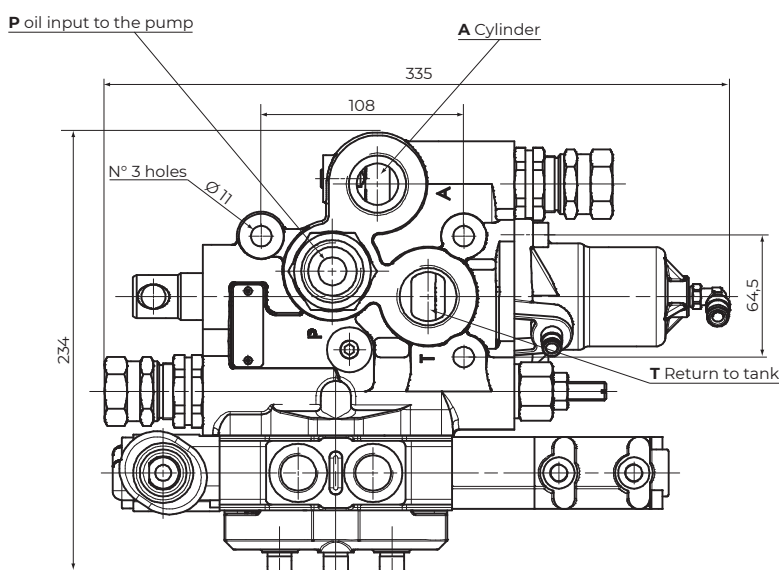
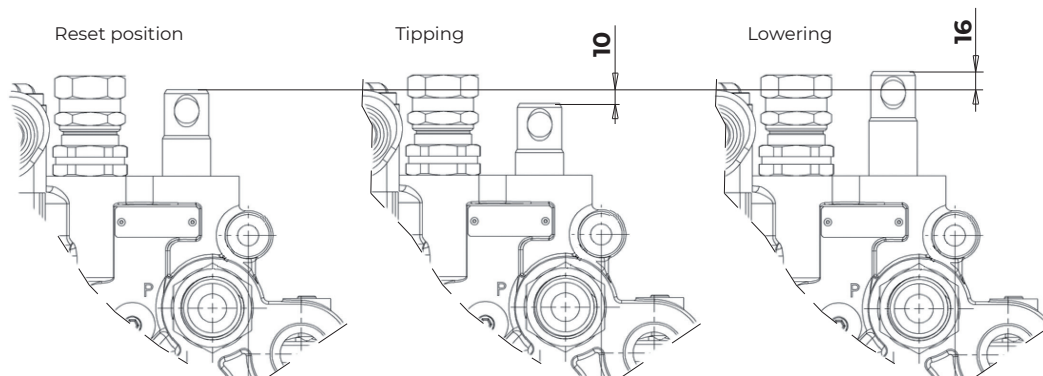


Part. no.: 14708852 SECTION VALVE 250-2-SA/DA-150-PN
 14708854 SECTION VALVE 250-2-SA/DA-190-PN
 14708856 SECTION VALVE 250-2-SA/DA-220-PN


Dimensions in mm


Pneumatic control valve for high flows, open centered to meet the CE requirements, it is especially designed for heavy duty tipper, off-road tipper and semi-trailers. We recommend to use an air control with proportional lowering functionality. The main valve is made of galvanized nodular cast iron body, nickel spool and it is ready to accept one or more auxiliary valves. These auxiliary valves are pneumatically controlled and complete with manual override system and can be either single or double acting. They can be fitted together up to 3 sections. The main valve is complete with direct/cartridge/pilot relief valve on the cylinder port as well as a relief valve and flow regulator on the auxiliary valve port.


Spool positions

Technical features of main valve

Type	14708852	14708854	14708856
Flow rate		250 l/min	
Max. working pressure		320 bar	
Working temperature		-15 +110°C	
Oil viscosity		12 - 100 cSt	
Oil filtering		< 25 µm	
Standard pressure setting	150 bar	190 bar	220 bar
Max. pressure setting		280 bar	
Max. pneumatic pressure		12 bar	

Technical features of auxiliary valves

Flow rate	60 l/min
Max. working pressure	320 bar
Working temperature	-15 +110°C
Oil viscosity	12 - 100 cSt
Oil filtering	< 25 µm
Max. pneumatic pressure	12 bar

Spare parts

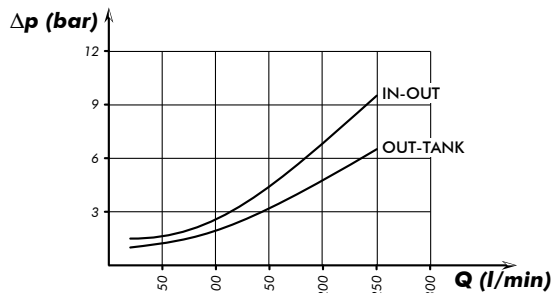
Part.no	Description
14708800	Seal kit main valve 1470885x
14708801	Seal kit section 1470885x

Related documentation

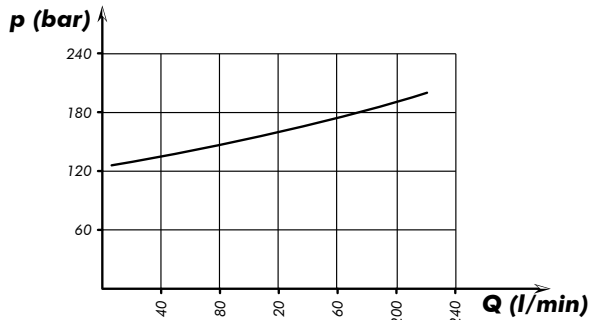
Mounting instructions: MODUL-GATE-0005

Main Valve

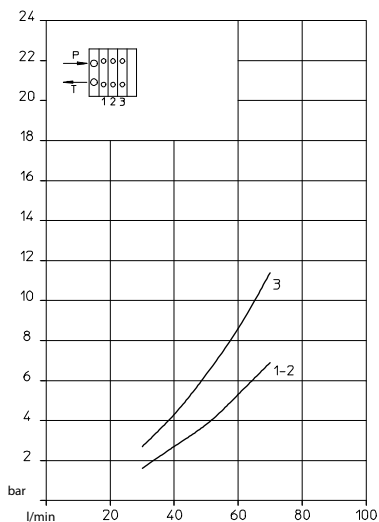
Tipping valve pressure drops



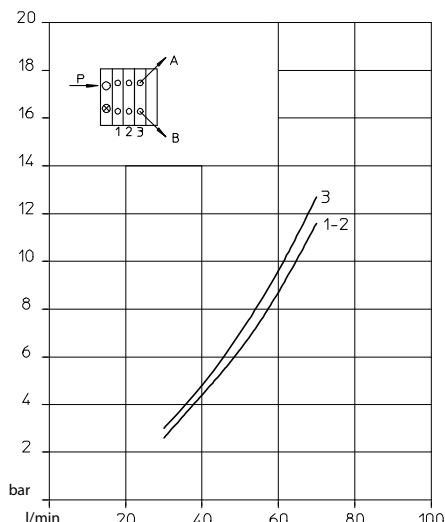
p-Q operating curve for Direct pressure relief valves



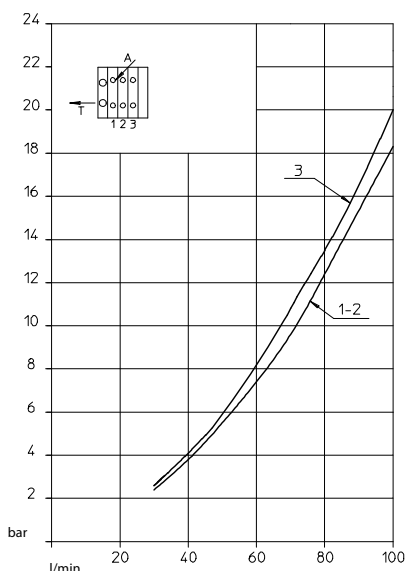
Auxiliary valves



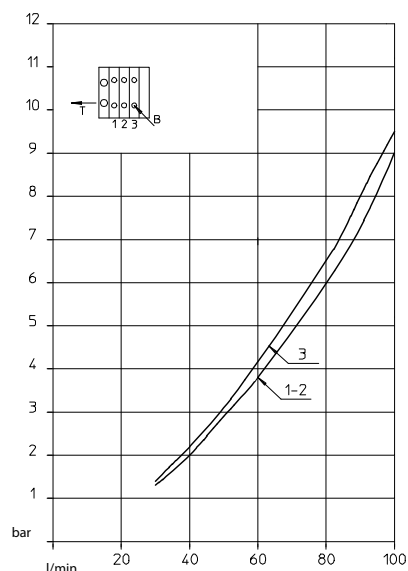
Pressure drop auxiliary valve



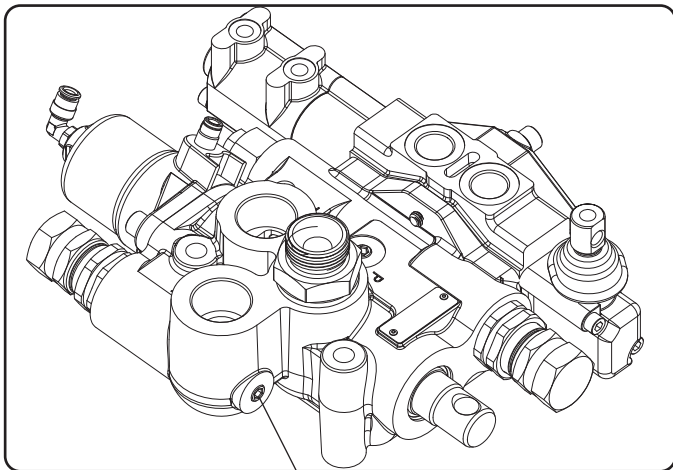
Pressure drop auxiliary valve



Pressure drop auxiliary valve

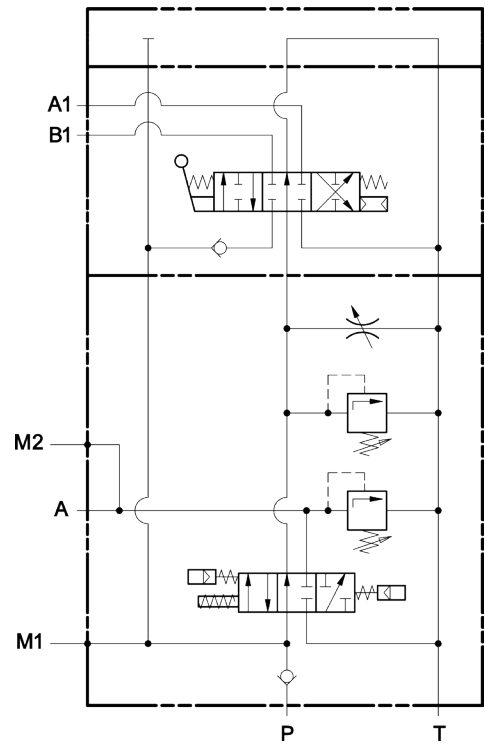


Pressure drop auxiliary valve



Port for cylinder pressure G 1/8" **M2**

Hydraulic Scheme



B1 Auxiliary port G 1/2"

Port for pump pressure G 1/8" **M1**

Oil input from the pump G 1" **P**

Cylinder G 1" **A**

Return to Tank **T**

Mechanical control auxiliary valve

B1

Relief valve for auxiliary valves

Tipper relief valve

screw washer

Cover plate auxiliary valves

B1

A1

Flow regulator auxiliary valves

Lowering pneumatic control (6mm air pipe)

Tipping pneumatic control (6mm air pipe)

Pneumatic controls auxiliary valves G 1/8"

Auxiliary port G 1/2" **A1**