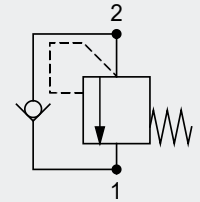


## Pressure relief valve EDB



direct operated  
with anti-cavitation/check function  
max. operating pressure 420 bar  
max. volume flow 60 l/min  
cavity EDB, T-10A or T-13A



090120\_EDB\_e  
09.2019

### Table of contents

Contents	Page
Characteristics	1
Technical data	2
Performance	2
Dimensions	3
Type code	7
Accessories and additional information	7

### Characteristics

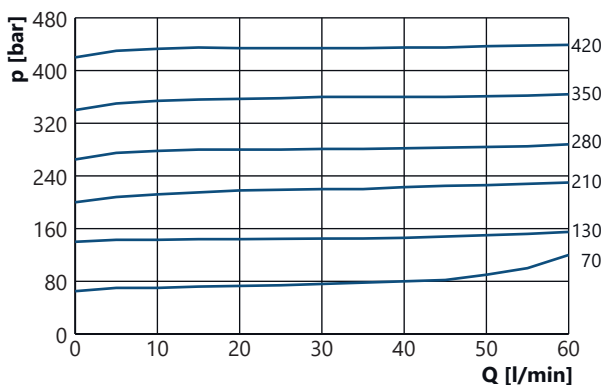
- pressure relief valve with anti-cavitation/check function
- slip-in valve for cavity EDB or
- screw-in valve T-10A or T-13A
- also available in in-line body or as double slip-in valve in in-line body
- compact design
- minimum oil leakage
- maintenance-free

## Technical data

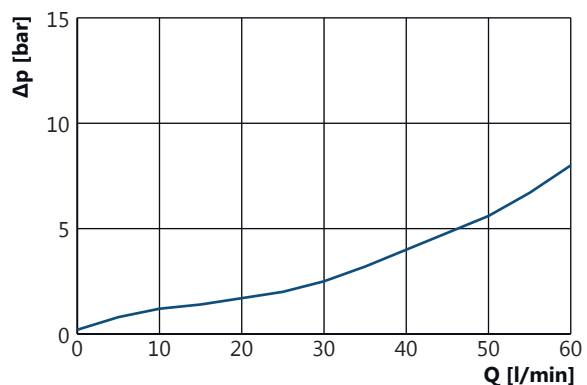
<i>Hydraulic</i>	Operating pressure max.:	EDB: 420 bar EDB38, DEDB, EDB10, EDB13: 350 bar	
	Flow rate max.:	EDB: 60 l/min EDB38, DEDB, EDB10, EDB13: 50 l/min	
	Pressure setting range:	see type code	
	Opening pressure anti-cavitation valve:	<0,5 bar	
	Hydraulic fluid:	mineral oil according to DIN 51524, other hydraulic fluids upon request	
	Viscosity range:	7,4 - 420 cSt	
	Filtration:	oil cleanliness according to ISO 4406 (1999) 18/16/13, filter with $\beta$ 5(c) > 200	
	Hysteresis:	10 %	
	<i>Mechanic</i>	Design :	EDB: slip-in valve, EDB38: slip-in valve in in-line body, DEDB: double valve in in-line body, EDB10/EDB13: cartridge valve T-10A/T-13A
		Fluid temperature:	-30 °C to +80 °C
Ambient temperature:		-30 °C to +80 °C	
Storage temperature:		-30 °C to +60 °C (non-condensing)	
Installation position:		any	
Weight:		EDB: 0,015 kg, EDB38: 0,3 kg, DEDB: 1,15 kg, EDB10/EDB13: 0,06 kg	
Material:		valve parts: steel seals: NBR, Viton optional	
Surface protection:		exterior parts: zinc coated steel	

## Performance

Pressure diagram (p/Q) EDB from 2 to 1



Pressure drop diagram ( $\Delta p$ /Q) anti-cavitation/ check valve from 1 to 2



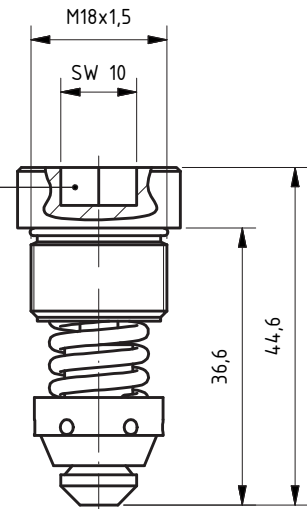
*Test conditions* Oil: HLP 32, temperature: 40 °C (~32 cSt)  
Higher viscosity changes the performance diagrams.  
Factory pressure settings established at Q = 10 l/min.

**NOTE** With manifolds the performance may vary.

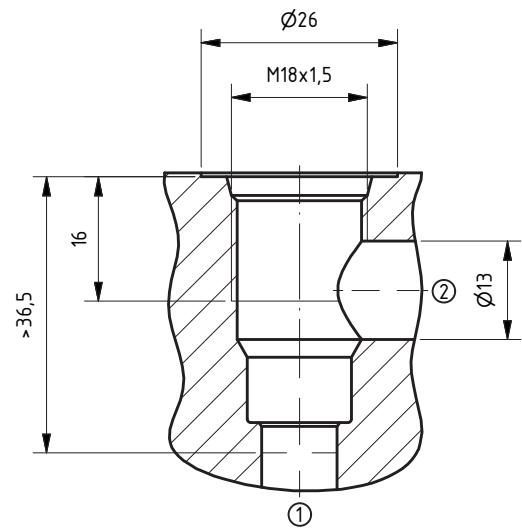
## Dimensions

### Slip-in valve EDB

installation torque 35 - 40 Nm



### Cavity EDB

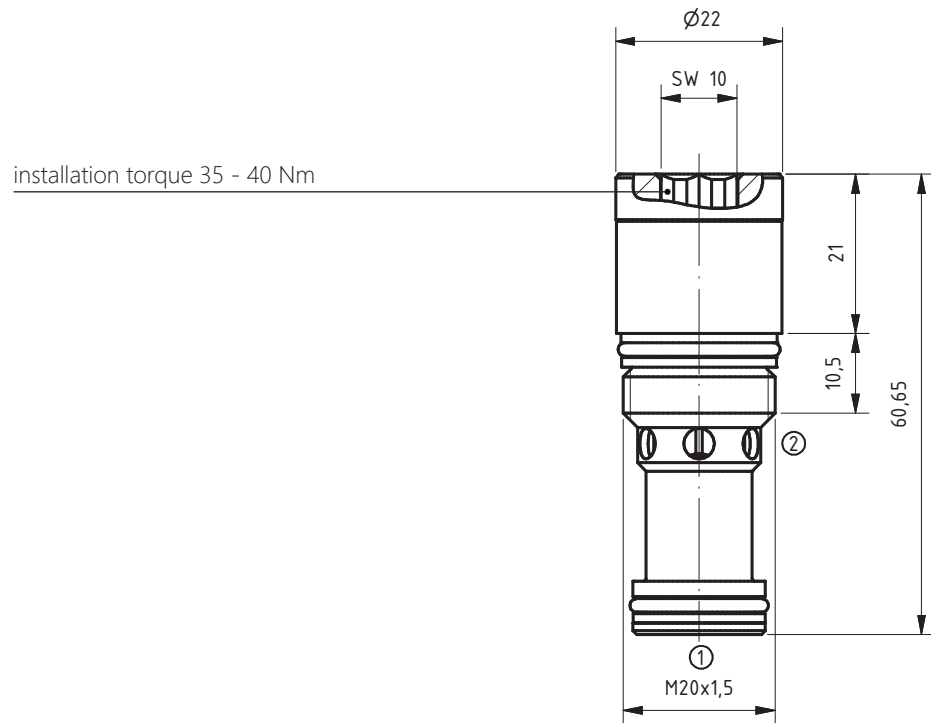


HE4/15 26 01

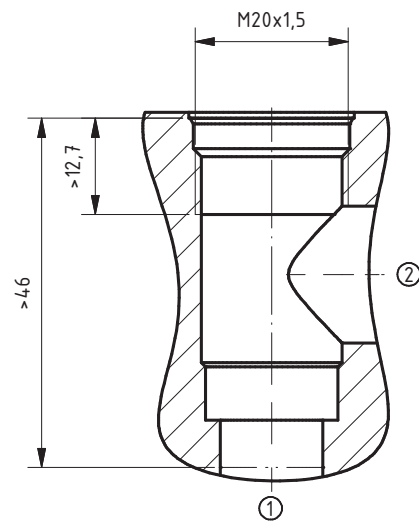
**NOTE** For a detailed drawing of the cavity please see chapter 11 „general information“ or our online catalogue at [www.weber-hydraulik.com](http://www.weber-hydraulik.com).

### Dimensions

Cartridge valve  
EB10



Cavity T-10A



HE4/15 27 10

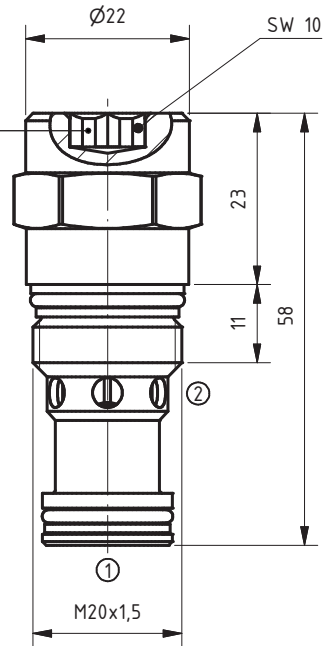
**NOTE** For a detailed drawing of the cavity please see chapter 11 „general information“ or our online catalogue at [www.weber-hydraulik.com](http://www.weber-hydraulik.com).

**NOTE** For appropriate manifolds see chapter 10 „connecting plates and manifolds“ as well as our online catalogue at [www.weber-hydraulik.com](http://www.weber-hydraulik.com).

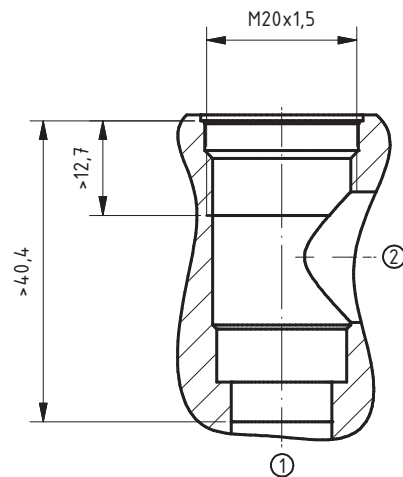
**Dimensions**

Cartridge valve  
EDB13

installation torque 35 - 40 Nm



Cavity T-13A



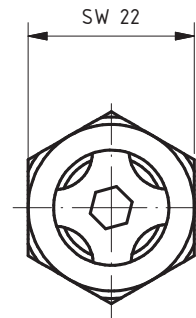
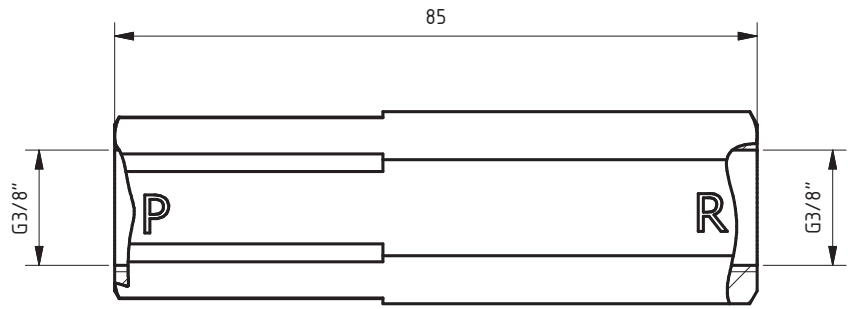
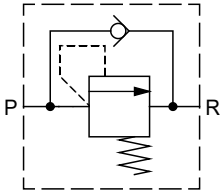
HE4/15 27 11

**NOTE** For a detailed drawing of the cavity please see chapter 11 „general information“ or our online catalogue at [www.weber-hydraulik.com](http://www.weber-hydraulik.com).

**NOTE** For appropriate manifolds see chapter 10 „connecting plates and manifolds“ as well as our online catalogue at [www.weber-hydraulik.com](http://www.weber-hydraulik.com).

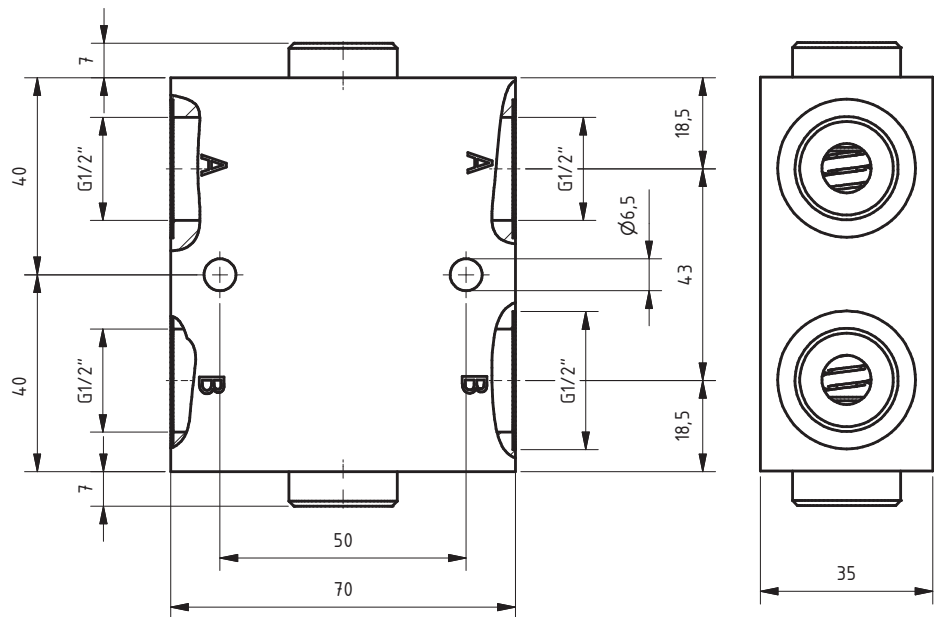
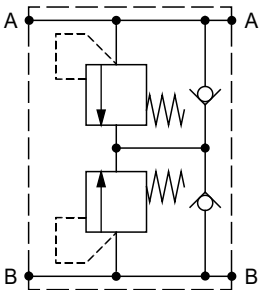
**Dimensions**

*Slip-in valve in  
in-line body  
EDB38*



HM4/08 04 14

*double slip-in valve  
in in-line body  
DEDB*



HM3/15 37 06

**Type code**

<b>Design</b>	<b>Pressure setting range*</b>	<b>Locking screw</b>
<b>EDB</b> slip-in valve	20-70 bar <b>20-70</b>	with locking screw, with CV*** spring
<b>EDB38</b> slip-in valve in in-line body (G 3/8")	71-130 bar <b>71-130</b>	without locking screw, with CV spring <b>F</b>
<b>DEDB</b> double slip-in valve in in-line body (G 1/2")	131-210 bar <b>131-210</b>	without locking screw, without CV spring <b>O</b>
<b>EDB10</b> cartridge valve T-10A	211-280 bar <b>211-280</b>	
<b>EDB13</b> cartridge valve T-13A	281-350 bar <b>281-350</b>	
	351-420 bar** <b>351-420</b>	

\* Please select pre-adjusted pressure setting according to your needs.  
Once set, the pressure setting is permanent and can not be changed afterwards.  
**Exception:** The EDB is available with or without a fixed pressure setting.  
\*\* only available for EDB  
\*\*\* CV = check valve

**NOTE** Factory pressure settings are established at Q = 10 l/min.

**Accessories and additional information**

Accessories/ spare parts	Article:	Material number:
	Seal kit T-10A / T-13A (NBR)	405.0036
	Seal kit T-10A / T-13A (Viton)	405.0037

**NOTE** For appropriate manifolds see chapter 10 „connecting plates and manifolds“ as well as our online catalogue at [www.weber-hydraulik.com](http://www.weber-hydraulik.com).

**Manual** Information regarding installation, set-up and maintenance can be found in our product catalogue in chapter 11 „general information“ under the category „general operating manual“ or will be provided upon request.



WEBER-HYDRAULIK ValveTech GmbH  
Felix-Wankel-Str. 4, 78467 Konstanz  
Phone: +49 7531 9748-0  
Fax: +49 7531 9748-44

[www.weber-hydraulik.com](http://www.weber-hydraulik.com)  
[info.de-k@weber-hydraulik.com](mailto:info.de-k@weber-hydraulik.com)

All rights reserved