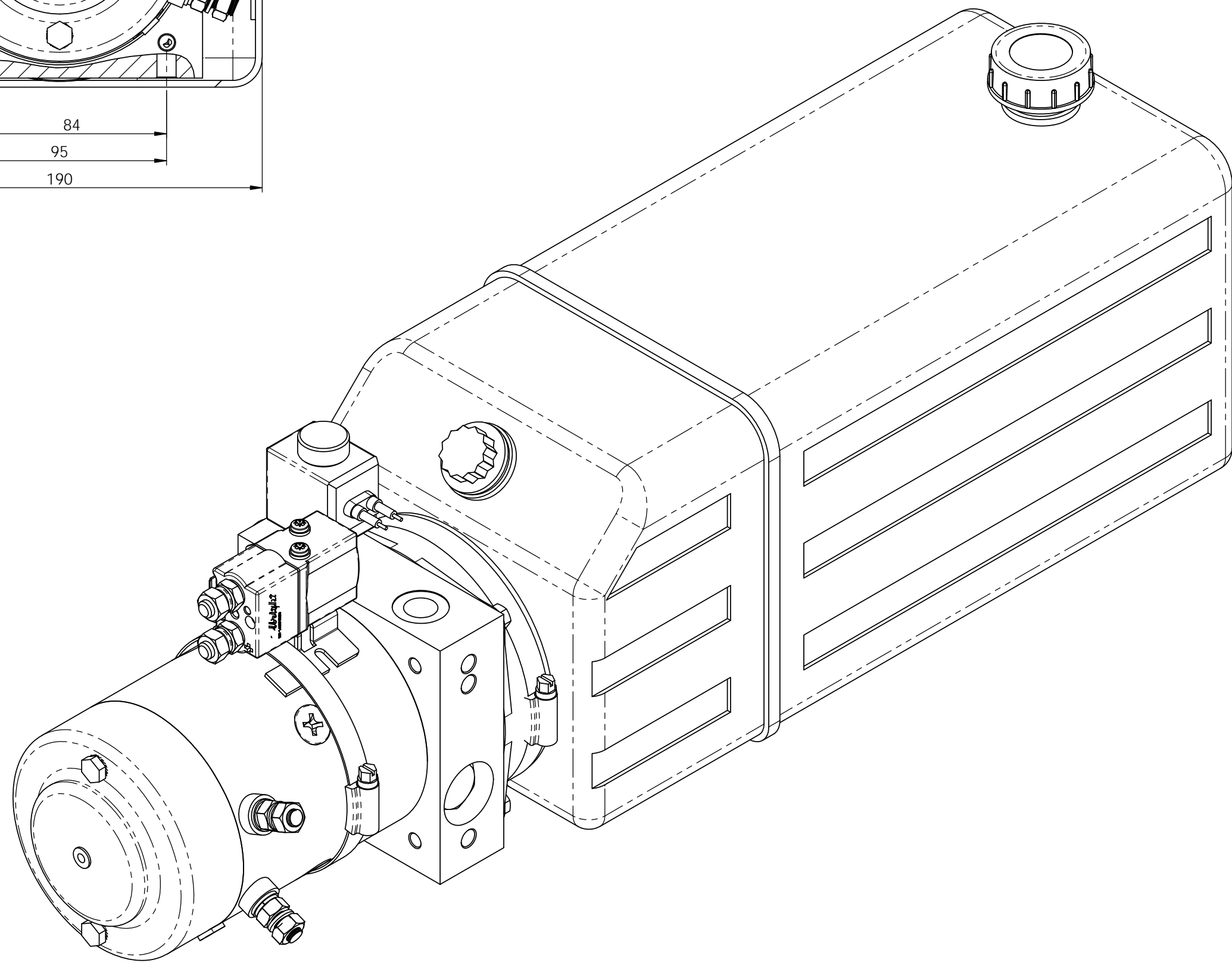
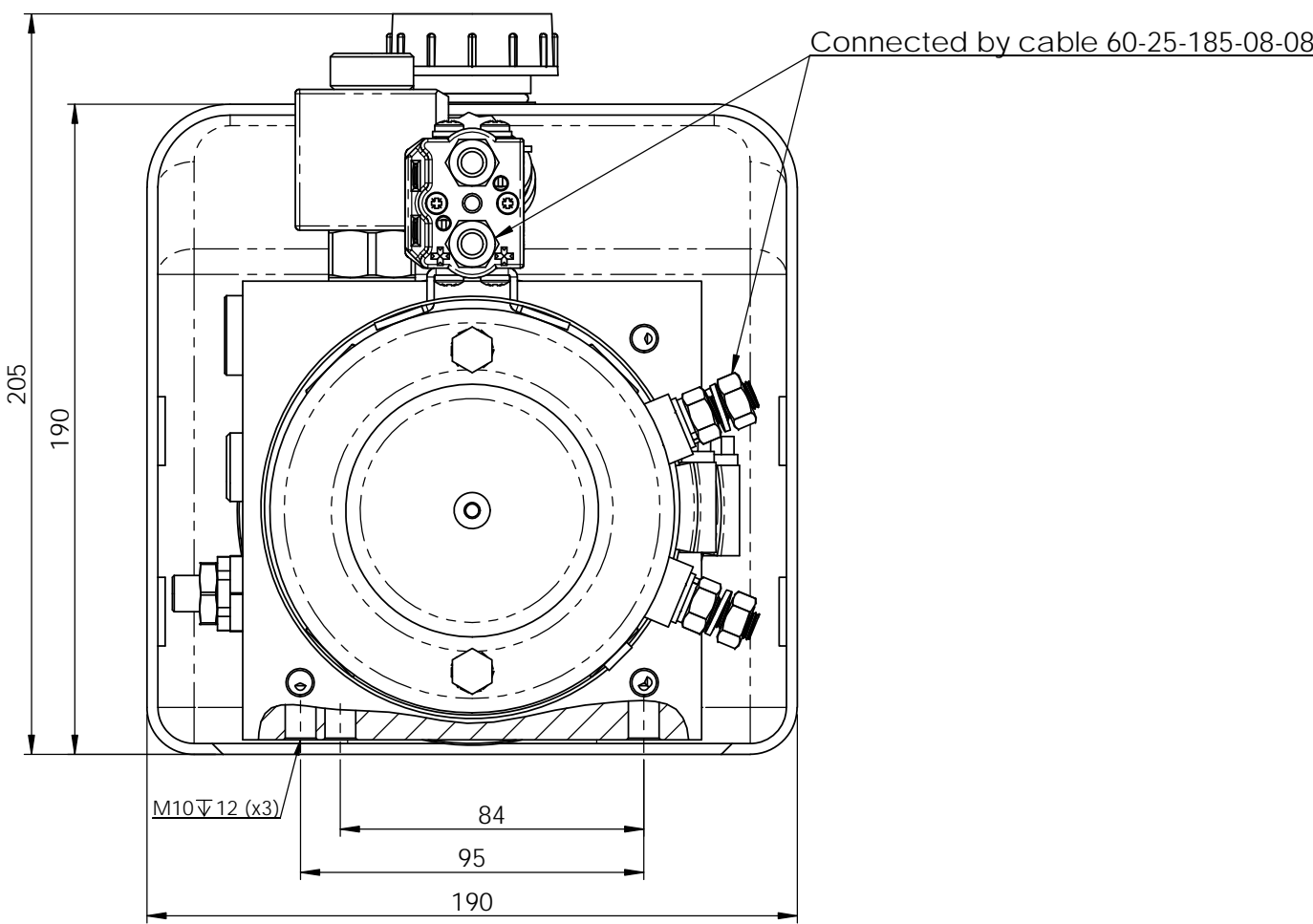
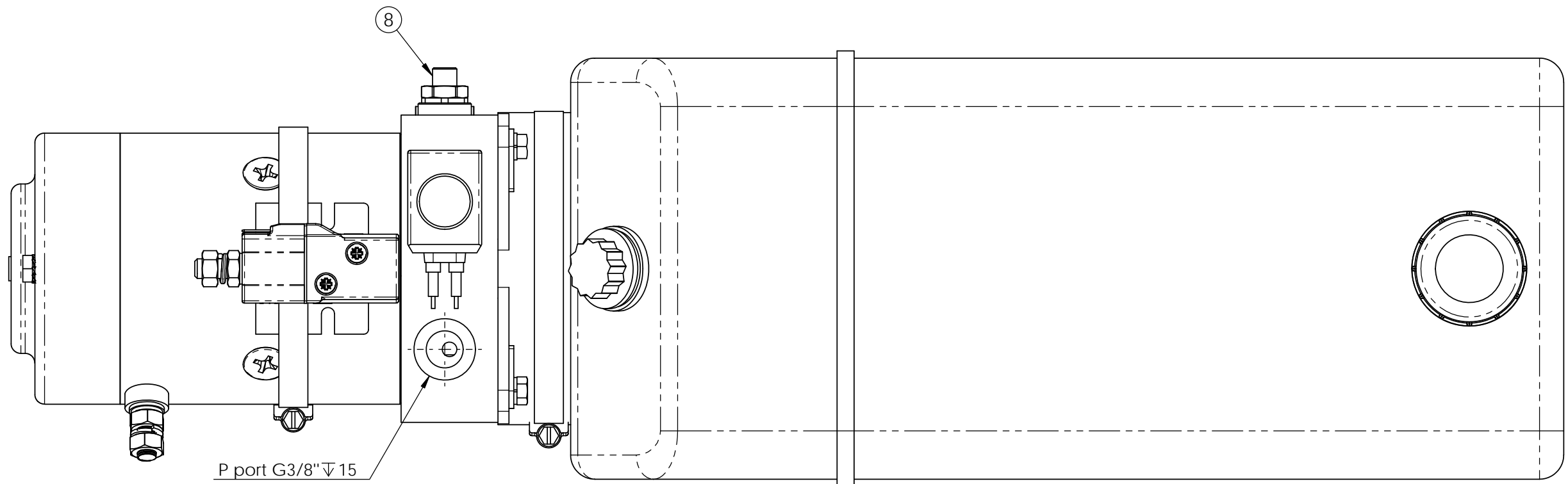
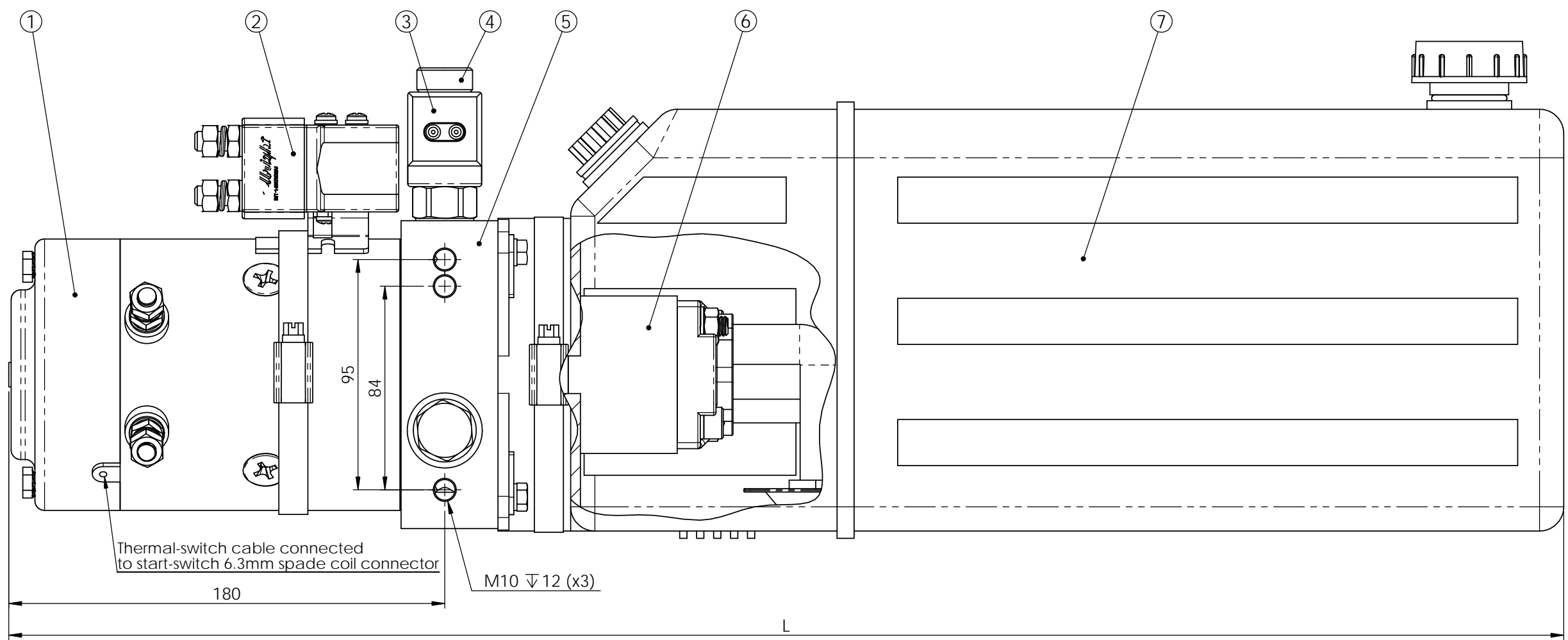


The drawing is property of Hydraulfunktion AB and is loaned subject to return upon demand. It is not to be reproduced or used directly or indirectly in any way detrimental to the interest of Hydraulfunktion AB.



Order code example:
12V 12C20-06-20-3.2-8P Tank C200-TNK8P

WARNING

This power unit does not contain devices which protects users from the effect of sudden loss of pressure in hydraulic cylinders.

It is responsibility of the user to ensure the conformity of the installation with the local safety and health regulations, including a safety risk assessment.

It is prohibited to utilise the machine in which this product has been integrated before the former has been certified as complying with the conditions of machines guideline.

| Tank Type | code | specification | L | horizontal capacity | vertical capacity |
|-------------|------|---------------|-----|---------------------|-------------------|
| C200-TNK4P | 4P | 4 Liter | 402 | 4.0L | 3.2L |
| C200-TNK5P | 5P | 5 Liter | 492 | 5.9L | 5.5L |
| C200-TNK6P | 6P | 6 Liter | 537 | 7.1L | 6.5L |
| C200-TNK8P | 8P | 8 Liter | 642 | 9.9L | 8.7L |
| C200-TNK12P | 12P | 12 Liter | 752 | 12.7L | 11.2L |

| Solenoid Valve Type | code | specification | circuit |
|---|------|-------------------------|----------|
| SV-08-2-1NC | 06 | normally closed (NC) | C200-06 |
| SV-08-2-1NC-M | 06M | NC with manual override | C200-06M |
| standard magnet type is with dual flying leads. Other connectors on request | | | |
| IP69K (waterproof) magnets available on request | | | |

| Pump part nr. | code | specification | flow at 180 bar (l/m)* | | flow at 120 bar (l/m)* | |
|---------------|------|-----------------|------------------------|-----------|------------------------|-----------|
| | | | 12V motor | 24V motor | 12V motor | 24V motor |
| 23-10-1.2-AN | 1.2 | pump 1.2ccm/rev | 3.4 | 3.6 | 3.8 | 4.0 |
| 23-10-1.7-AN | 1.7 | pump 1.7ccm/rev | 4.0 | 4.4 | 4.6 | 5.0 |
| 23-10-2.5-AN | 2.5 | pump 2.5ccm/rev | 4.7 | 5.9 | 6.3 | 7.0 |
| 23-10-3.2-AN | 3.2 | pump 3.2ccm/rev | 5.3 | 7.1 | 7.1 | 8.3 |

other sizes available on request

* nominal performance, real values may differ in practical use.

Adjustable relief valve pre-setting : 180 bar

The DC motor is of S2/S3 duty, which can only be worked intermittently.

The dc motor and the solenoid valve should be activated simultaneously. It is forbidden to run the motor alone.

Mount this power pack horizontally (variant for vertical mounting on request)

Check the oil level in the tank after the first start of the power unit and filling of the application.

Change the oil after the first 100 hours of using the power unit, then change the oil every 3000 hours.

Hydraulic Fluid: use only ISO 6743/4 (DIN 51519) mineral base fluids, new and filtered before use (25µ).

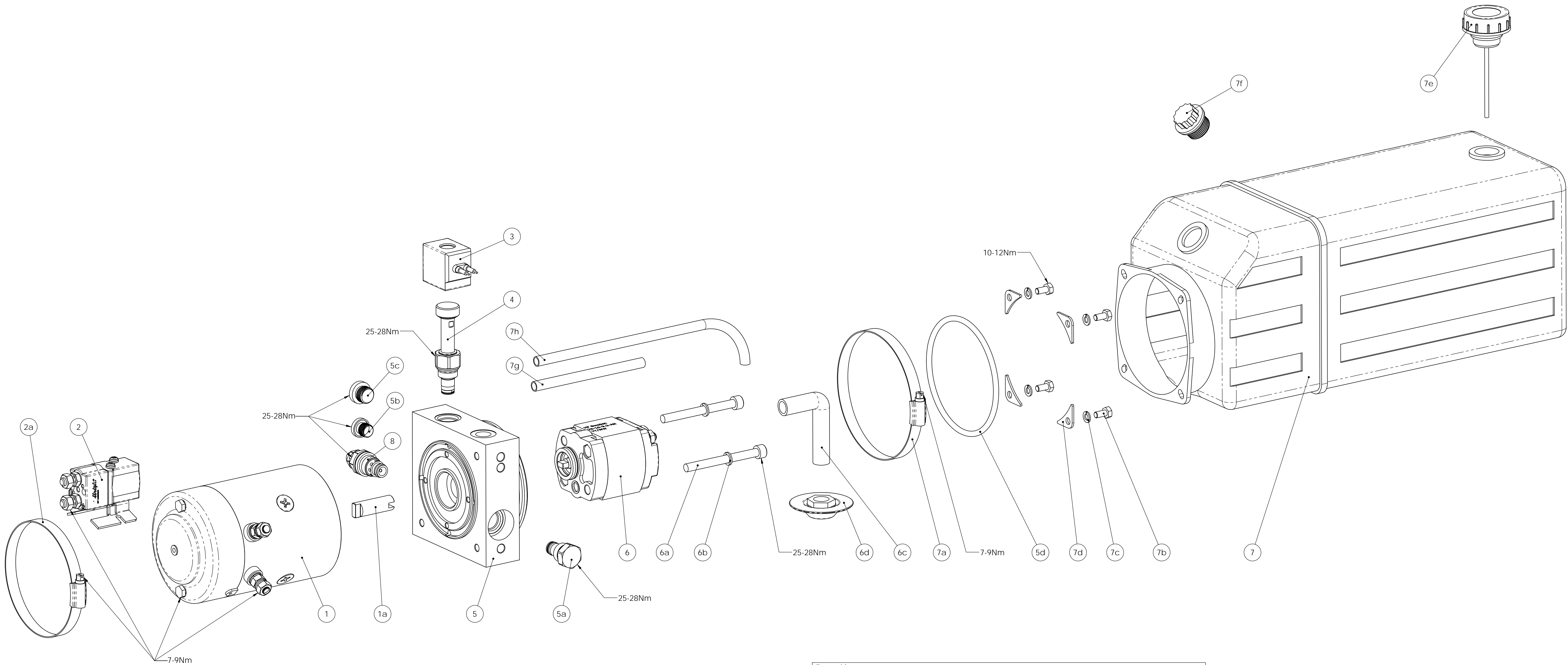
| NO. | Name | Part No. | DESCRIPTION | QTY. |
|-----|---------------|---------------------------|--------------|------|
| 1 | Motor | 102312(12V)/102324(24V) | motor 2KW | 1 |
| 2 | Start switch | 3512(12V)/3524(24V) | SU60 P | 1 |
| 3 | Solenoid | S2-12-L(12V)/S2-24-L(24V) | | 1 |
| 4 | 2/2 Valve | See list | | 1 |
| 5 | Adapter block | C200-06 | | 1 |
| 6 | Pump | See list | | 1 |
| 7 | Tank | See list | Plastic tank | 1 |
| 8 | Relief valve | RV-08 | | 1 |

| | | | | |
|---|-----------|---|--------------|------------------------|
| Drawing interpretation unless otherwise specified | | Hydraufunktion AB Kungsgatan 67 SE-341 32 Ljungby, SWEDEN | | First Angle Projection |
| Tolerance : ISO 2768-m | Drawn: FF | Date | Title | |
| Surface finish : $\sqrt{3.2}/\sqrt{3.2}$ | Approved: | 20140310 | Power Pack | |
| All measures intends finished product | Scale 1:2 | Format A1 | Sheet 1 of 2 | Number |
| | | | C200-06-2KW | Rev |

Note: HF uses a network of qualified suppliers to ensure availability. There might be minor dimensional and cosmetic differences between drawing and supplied products.

| Rev | Change | Date | Sign. | No. |
|-----|--------|------|-------|-----|
|-----|--------|------|-------|-----|

The drawing is property of Hydraulfunktion AB and is loaned subject to return upon demand. It is not to be reproduced or used directly or indirectly in any way detrimental to the interest of Hydraulfunktion AB.





| Parts List | | | | |
|------------|-----------------|---------------------------|---------------------|------|
| NO. | Name | Part No. | DESCRIPTION | QTY. |
| 1 | Motor | 102312(12V)/102324(24V) | | 1 |
| 1a | Coupling | DA-C200-W | | 1 |
| 2 | Start switch | 3512(12V)/3524(24V) | SU60 P | 1 |
| 2a | Hose clamp | SK-120-09 | | 1 |
| 3 | Solenoid | S2-12-L(12V)/S2-24-L(24V) | | 1 |
| 4 | 2/2 Valve | See list | | 1 |
| 5 | Adapter block | C200-06 | | 1 |
| 5a | Check valve | CV-08-B | | 1 |
| 5b | Plug | G1/4" | | 1 |
| 5c | Plug | G3/8" | | 1 |
| 5d | O-ring | 104.14x5.33 | NBR70 | 1 |
| 6 | Pump | See pump list | | 1 |
| 6a | Screw | See pump list | | 2 |
| 6b | Spring washer | 8 DIN127B | | 2 |
| 6c | Elbow | C200-SV | | 1 |
| 6d | Suction filter | C200-SF-63 | | 1 |
| 7 | Tank | See tank list | | 1 |
| 7a | Hose clamp | SK-140-12 | | 1 |
| 7b | Bolt | m6s6x16 | | 4 |
| 7c | Spring washer | 6 DIN127B | | 4 |
| 7d | Triangle washer | C200-TNK-BR-07 | | 4 |
| 7e | Tank breather | C200-TNK-BR43 | | 1 |
| 7f | Tank plug | C200-TNK-PL43 | | 1 |
| 7g | Return hose | Ø 10x1.25 PA12 DIN74324 | Length acc. to tank | 1 |
| 7h | Return hose | Ø 10x1.25 PA12 DIN74324 | Length acc. to tank | 1 |
| 8 | Relief valve | RV-08 | | 1 |

| Valve List | |
|------------|---------------|
| code | Pos.4 |
| 06 | SV-08-2-1NC |
| 06M | SV-08-2-1NC-M |

| Pump List | | |
|-----------|--------------|----------|
| code | Pos. 6 | Pos. 6a |
| 1.2 | 23-10-1.2-AN | mc6s8x75 |
| 1.7 | 23-10-1.7-AN | mc6s8x75 |
| 2.5 | 23-10-2.5-AN | mc6s8x80 |
| 3.2 | 23-10-3.2-AN | mc6s8x80 |

| Tank List | |
|-----------|-------------|
| code | Pos.7 |
| 4P | C200-TNK4P |
| 5P | C200-TNK5P |
| 6P | C200-TNK6P |
| 8P | C200-TNK8P |
| 12P | C200-TNK12P |

| Rev | Change | Date | Sign. | No. |
|-----|--------|------|-------|-----|
|-----|--------|------|-------|-----|

| | | | | | | |
|---|---|--------|--|-------------|---|--|
| Drawing interpretation unless otherwise specified |  | | Hydrafunktion AB Kungsgatan 67 SE-341 32 Ljungby, SWEDEN | | First Angle Projection  | |
| Tolerance : ISO 2768-V | Drawn: FF | | Date | Title | | |
| Surface finish : | Approved: | | 20150817 | Power Pack | | |
| All measures intends finished product | Scale | Format | Sheet | Number | Rev | |
| | 1:2 | A1 | 2 of 2 | C200-06-2KW | | |