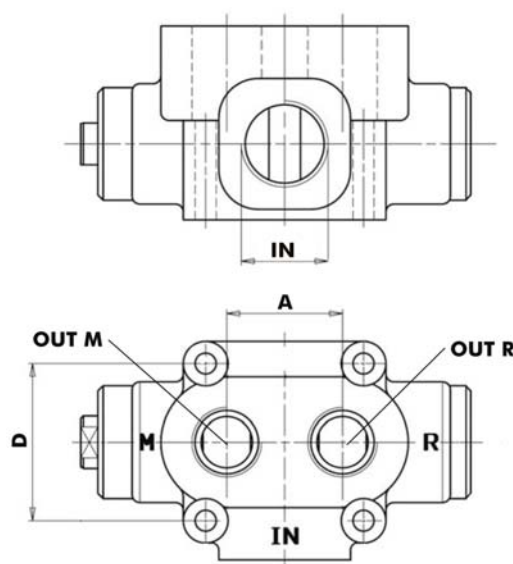


## FLOW DEFLECT VALVE AT 3 WAYS 2 POSITIONS

We are glad to inform you that our range of flow deflect valves with pneumatic control now includes also the versions with G1 and G3/4 connections. The valve body is galvanised and the slider is nickel plated.

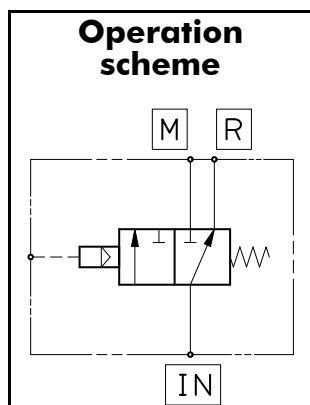


### Order codes are:

- **121-022-00141:** Valve for truck and trailers with G1 IN&OUT connections.
- **121-022-00150:** Valve for truck and trailers with G3/4 IN&OUT connections.

### We remind you that the following versions are available as well:

- **121-022-00132:** Valve for truck and trailers with G1 IN and G3/4 OUT connections.



Code	Pressure		Flow l/min	A	OUT M e R	IN	D	Weight kg
	In service bar	Max pick bar						
121-022-00132	350	400	250	44	G 3/4	G 1	60	2,5
121-022-00141			250	50	G 1	G 1	65	
121-022-00150			200	44	G 3/4	G 3/4	60	