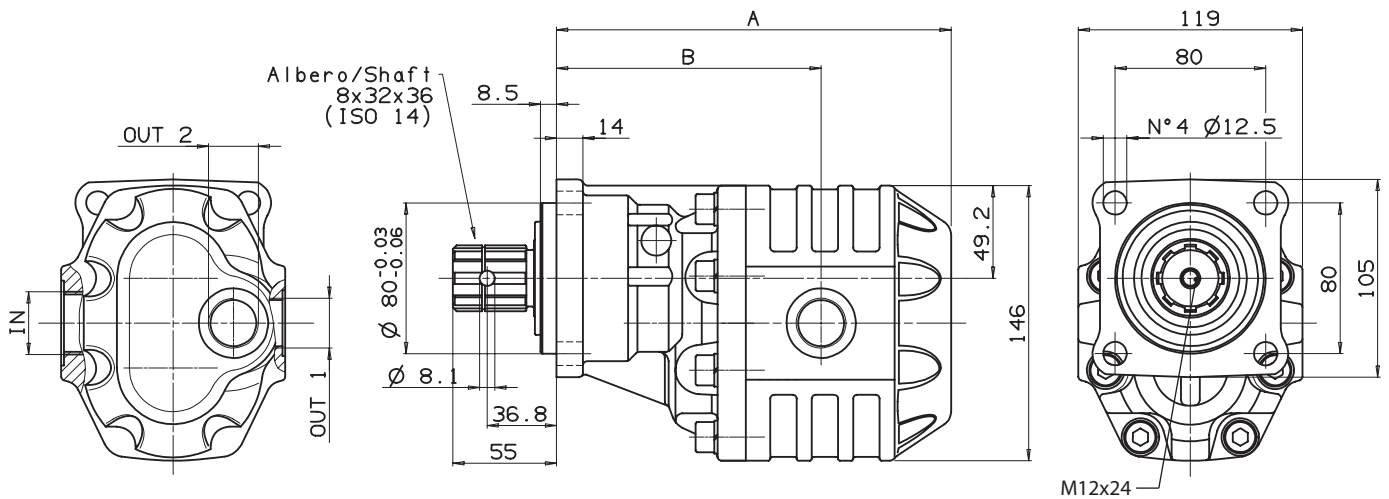


Fluido idraulico <i>Fluid</i>	Minerale o sintetico compatibile con guarnizioni: <i>Mineral or synthetic compatible with the following seals:</i> NBR, FKM, FPM, Nylon				
Viscosità cinematica consigliata <i>Kinematic viscosity suggested</i>	T media ambiente (°C) <i>Average ambient temp. (°C)</i>	< -10	-10÷10	10÷35	> 35
	VG (cSt = mm <sup>2</sup> /s)	22	32	46	68
Viscosità cinematica ottimale di esercizio <i>Optimale kinematic viscosity</i>			VG= 10 cSt ÷ 100 cSt		
Viscosità cinematica max consentita all'avviamento <i>Max kinematic viscosity suggested at the start-up</i>			VG= 750 cSt		
Indice di viscosità consigliato <i>Viscosity index suggested</i>		VI > 100		Temperatura di esercizio <i>Working temperature</i>	
				-15°C +100°C	
Grado di filtrazione <i>Oil filtering</i>			> 200 bar: 10 µm < 200 bar: 25 µm		
Pressione di aspirazione <i>Inlet pressure</i>			-0,3 ÷ 2 bar		
Senso di rotazione <i>Pump rotation</i>			Unidirezionale <i>Unidirectional</i>		

**Ingombro / Dimensions**

**Dati tecnici / Technical data**

Tipo pompa <i>Pump type</i>	Rotazione <i>Rotation</i>		IN ISO 228	OUT 1 ISO 228	OUT 2 ISO 228	A mm	B mm	Peso <i>Weight</i> Kg
	Destra / Right	Sinistra / Left						
NPH-17	<b>10501110173</b>	<b>10501110182</b>	G 1/2	G 1/2	G 1/2	168.5	119.5	11
NPH-22	<b>10501110226</b>	<b>10501110235</b>				172	121.5	11.5
NPH-27	<b>10501110271</b>	<b>10501110280</b>				174.5	124	12
NPH-34	<b>10501110342</b>	<b>10501110351</b>	G 3/4	G 3/4	G 3/4	179.5	125	13
NPH-43	<b>10501110431</b>	<b>10501110441</b>				185.5	130	13.5
NPH-51	<b>10501110511</b>	<b>10501110520</b>				190.5	130.5	14
NPH-61	<b>10501110619</b>	<b>10501110628</b>	G1	G1	G1	196.5	136.5	14.5
NPH-73	<b>10501110735</b>	<b>10501110744</b>				204.5	135.5	15
NPH-82	<b>10501110824</b>	<b>10501110833</b>				209.5	140.5	15.5
NPH-90	<b>10501110904</b>	<b>10501110913</b>	G1 1/4	G1	G 3/4	220.5	148.5	15.5
NPH-100	<b>10501111001</b>	<b>10501111010</b>				226.5	154.5	15
NPH-125	<b>10501111252</b>	<b>10501111261</b>				242.5	158.5	17

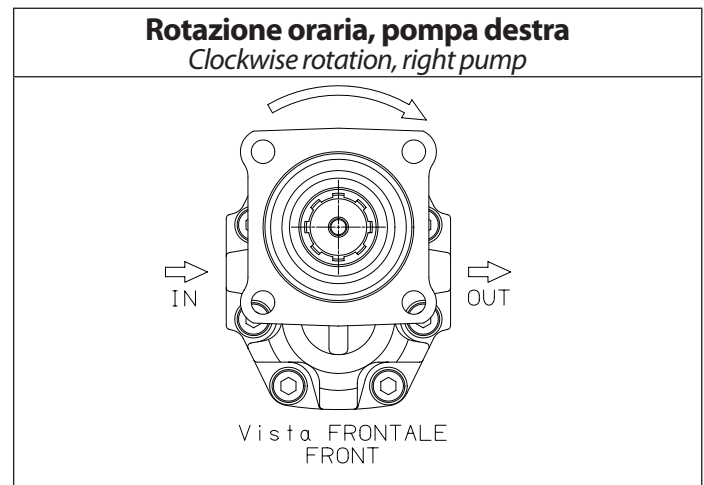
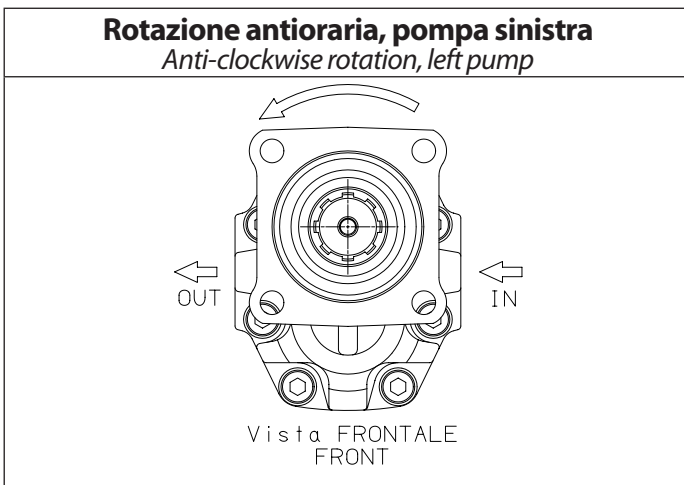
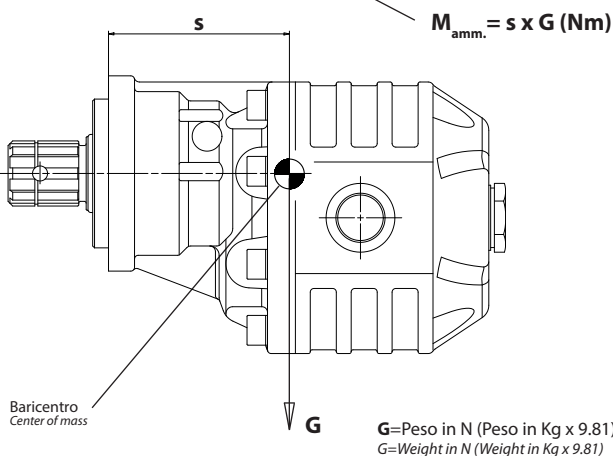
**Caratteristiche tecniche di funzionamento / Technical features**

Tipo pompa Pump type	Cilindrata Displacement cm <sup>3</sup> /rev	Pressione Pressure			Velocità max. continua Max. continuous speed rpm	Velocità max. intermittente Max. intermittent speed rpm	Velocità min. Min. speed rpm
		P1 bar	P2 bar	P3 bar			
<b>NPH-17</b>	17.04	290	315	325	2500	3000	300
<b>NPH-22</b>	22.15						
<b>NPH-27</b>	26.18						
<b>NPH-34</b>	33.88	280	300	310	2200	2800	
<b>NPH-43</b>	43.12	270	290	300	2000	2500	
<b>NPH-51</b>	50.82	240	260	280			
<b>NPH-61</b>	60.06	220	240	250	1900	2500	
<b>NPH-73</b>	72.88	205	225	230	1900	2500	
<b>NPH-82</b>	81.08	205	225	230	1900	2500	
<b>NPH-90</b>	90.43	180	200	220	1900	2500	
<b>NPH-100</b>	98.18	180	200	220	1500	1800	
<b>NPH-125</b>	122.72	160	180	200	1500	1800	

P1=Pressione max.continua  
P2=Pressione max. intermittente  
P3=Pressione max. di punta

Max. continuous pressure  
Max. Intermittent pressure  
Max. peak pressure

(100%)  
(20 sec.max.)  
(6 sec.max)

**Identificazione aspirazione/mandata / Suction/delivery identification**

**MOMENTO PESO / MASS MOMENT**


Tipo pompa - Pump type	<b>S</b>
<b>NPH-17</b>	93
<b>NPH-22</b>	94
<b>NPH-27</b>	96
<b>NPH-34</b>	99
<b>NPH-43</b>	101
<b>NPH-51</b>	103
<b>NPH-61</b>	106
<b>NPH-73</b>	110
<b>NPH-82</b>	113
<b>NPH-90</b>	120
<b>NPH-100</b>	121
<b>NPH-125</b>	130

LA POMPA E' MUNITA DI PARAOLIO BIDIREZIONALE E DI CUSCINETTI A RULLI CONICI SULL'ALBERO DI USCITA  
THE PUMP IS COMPLETE WITH DOUBLE OIL-SEAL AND TAPERED ROLLER BEARING ON THE OUTPUT SHAFT

PER MODIFICARE IL SENSO DI ROTAZIONE  
VEDERE ISTRUZ. 99700200042  
TO CHANGE THE DIRECTION OF ROTATION SEE  
INSTRUCTION 99700200042



**Link:**  
[Ricambi/SpareParts](#)  
[Istruzione/Instruction](#)