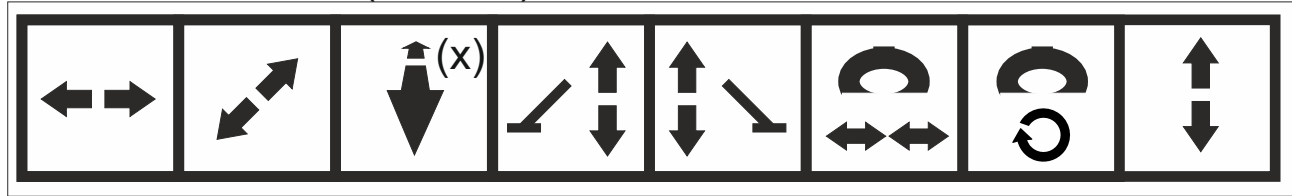
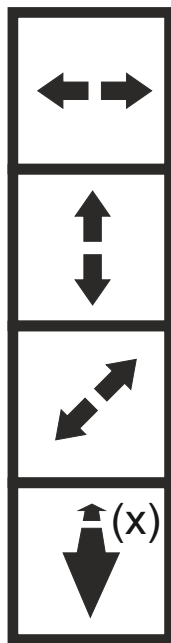


Standard control order

2-lever and 2-lever(3 koord) controls



Explanation of symbols

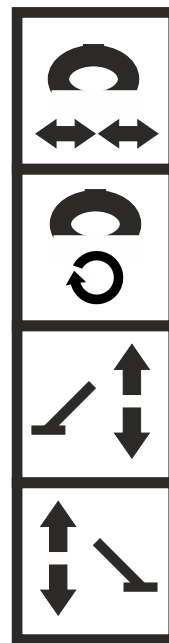


Main boom turning

Main boom rising/lowering

Folding in/out

Boom extension in/out



Grapple open/close

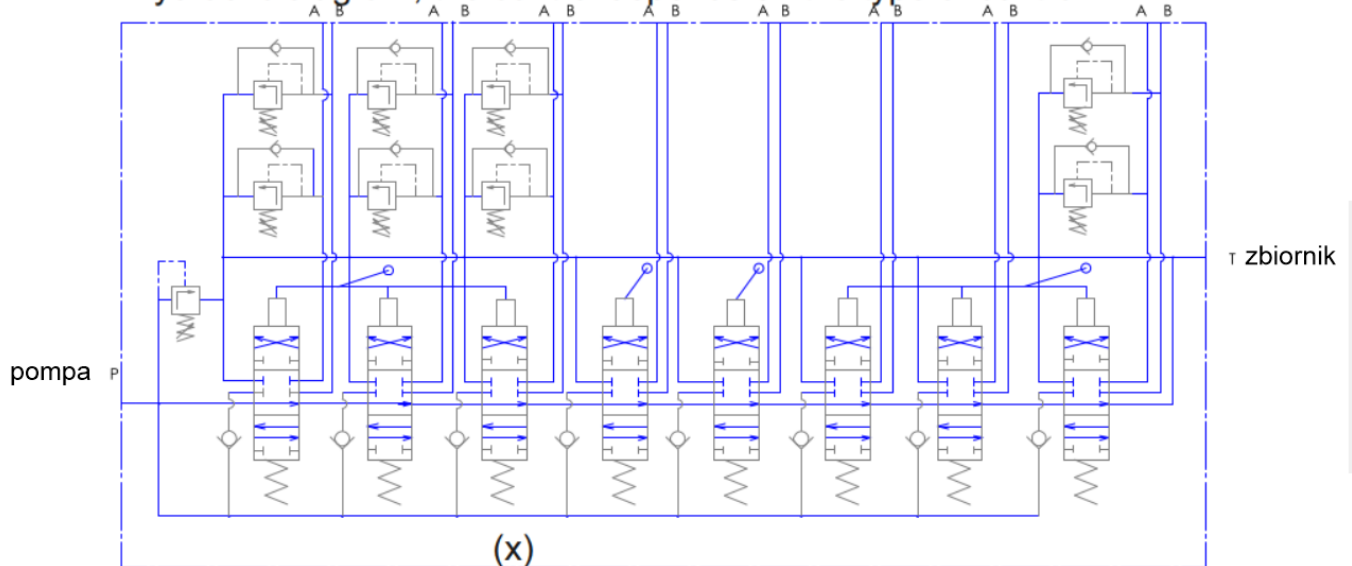
Grapple rotation (rotator)

Left support leg up/down

Right support leg up/down

(x) extension boom, only on CRV 60/8 models.

Hydraulic diagram, the control depends on the type of control.



www.finn-rotor.com

Slewing (F)	Sec. B (F)	Ex. B	Leg	Leg	Grapple	Rotator	Main B (F)
obrót Zurawia	II ramię przełamania	wysuw	podpory		chwytak	rotator	I ramię główne

www.finn-rotor.com