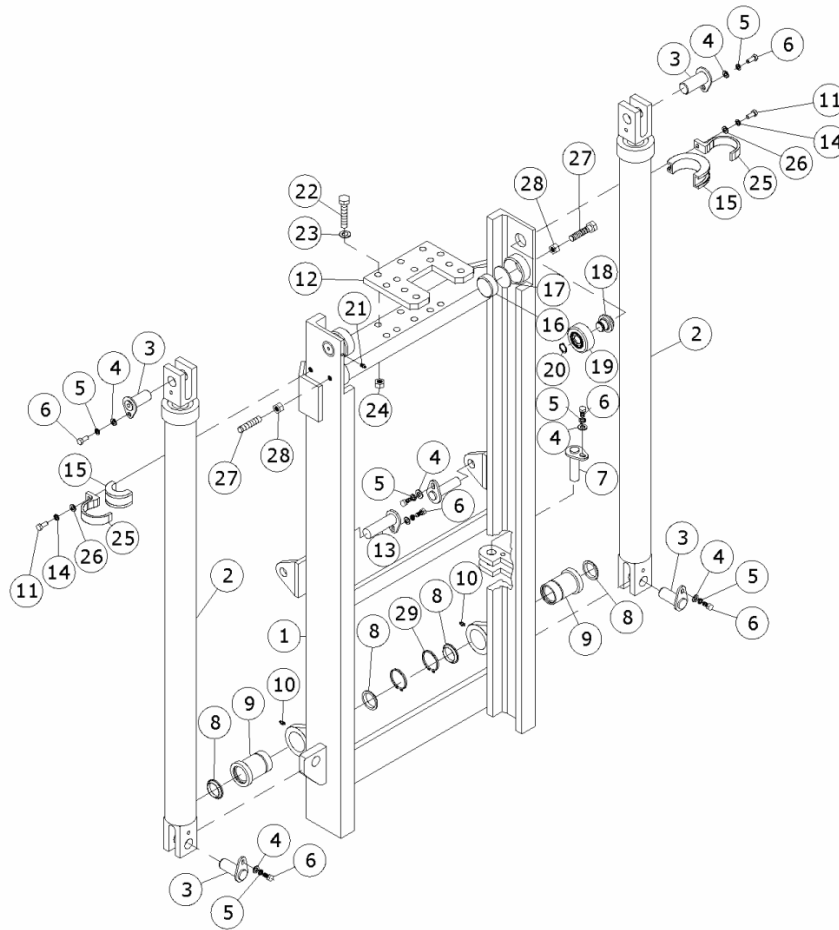


Model:M9 27.3 EUW
Chapter 2.2 04. Triplex Mast

P6B042
Triplex Mast Outer Section

P6B042 - Triplex Mast Outer Section



Pos	Part nr	Description	Quantity
1	051.059.0036	Mast Outer Section	1
2	See Section C.Lift Cylinder		2
3	302105	Pin	4
4	503.130.0004	M10 Flat Washer	7
5	503.999.0017	M10 Spring Washer	7
6	503.999.0032	M10 x 20 Bolt	7
7	007.100.0051	Pin	1
8	519.055.0023	Wiper Seal	4
9	058.055.0001	Bushing	2
10	550220	1/8 BSP Grease Point	2
11	503.055.0225	M12 x 25 Bolt	2
12	051.059.0007	Tensioner Plate	1
13	007.100.0053	Pin	2
14	503.999.0018	M12 Spring washer	2
15	041.055.0046	Rubber	2
16	058.059.0004	Wear Pad	2
17	550469	Wear Pad Seat	2
18	210433-2	Bearing Stub	2
19	210433-1	Bearing	2
20	201380	Circlip	2
21	260170	Grease Nipple	2
22	503.055.0382	5/8 NF x 4 Bolt	8
23	503.055.0065	M16 Flat Washer	8
24	503.055.0069	M16 Locknut	8
25	051.059.0035	Support Strap	2
26	503.999.0015	M12 Flat Washer	2
27	200197	M10 x 25 Grub Screw	2
28	200785	M10 Nut	2
29	509.055.0025	Circlip	2
Kit 529.999.0022 Bearing Assembly:			
18	210433-2	Bearing Stub	2
19	210433-1	Bearing	2
20	201380	Circlip	2